


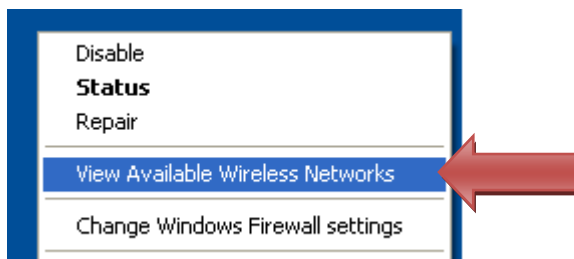
Connecting Windows XP to the KSC_Guest Wireless Network

NOTE: These instructions are the recommended way to connect to Keene State College Guest Wireless Network. You may be running a different wireless card utility and some of the settings may be located in different locations.

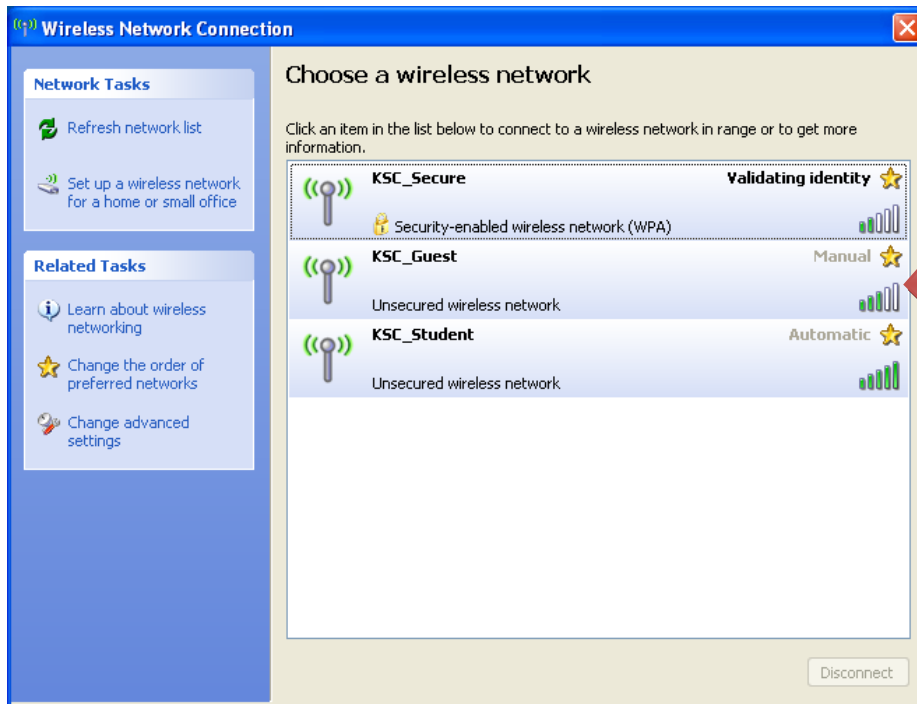
1. Go to your **Control Panel** and double-click on **Network Connections**. You may need to double-click on Network and Internet connections and then Network Connections depending on your preferred view.



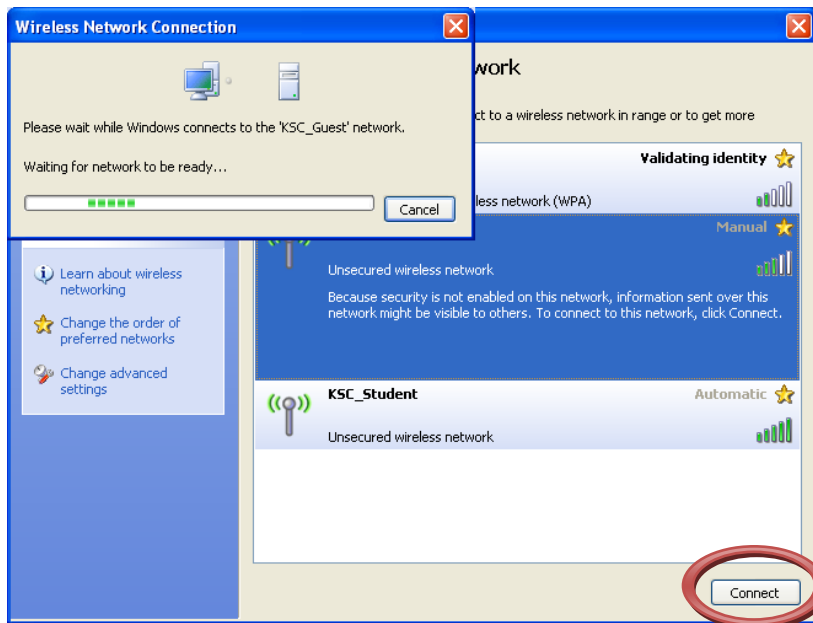
2. Right-click on **Wireless Network Connection** and confirm the wireless connection is enabled. You will know your connection is enabled if the only selection is **“Disable”** as shown here. If it is not enabled, select **“Enable”**.
3. Now right mouse click on  the **windows wireless network connection utility** and select **“View Available Wireless Networks”**



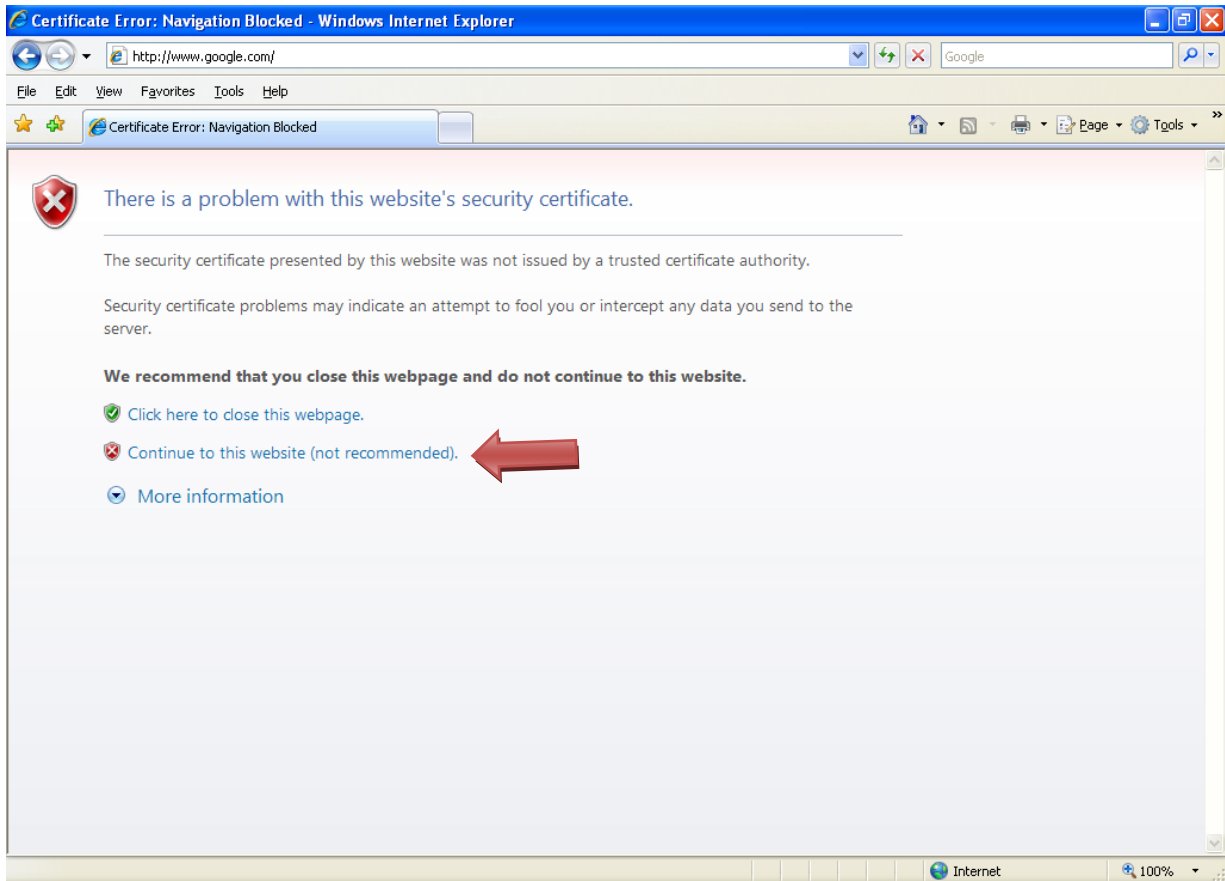
4. This will open up the **Wireless Network Connections** window and display all available broadcast networks in range of your wireless network card.



5. Select the **KSC_Guest** network and then click on **Connect**.

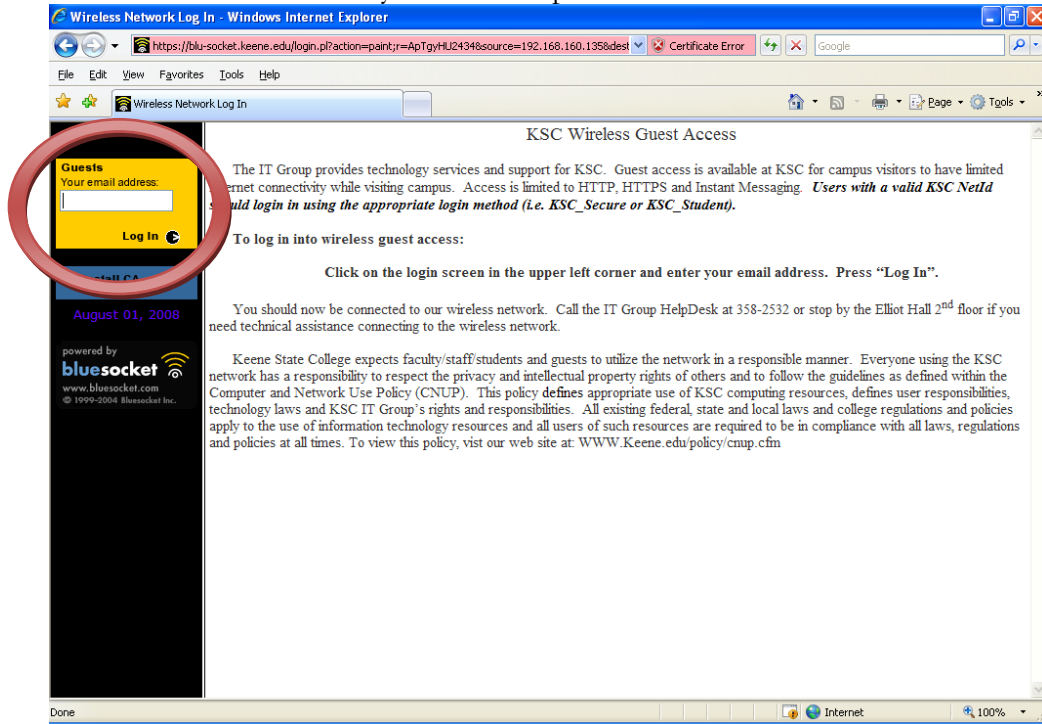


6. Once your wireless card connects to KSC_Guest, you need to open an Internet browser like Internet Explorer or Firefox. Once you try to connect to any non-keene.edu address you will see this screen.

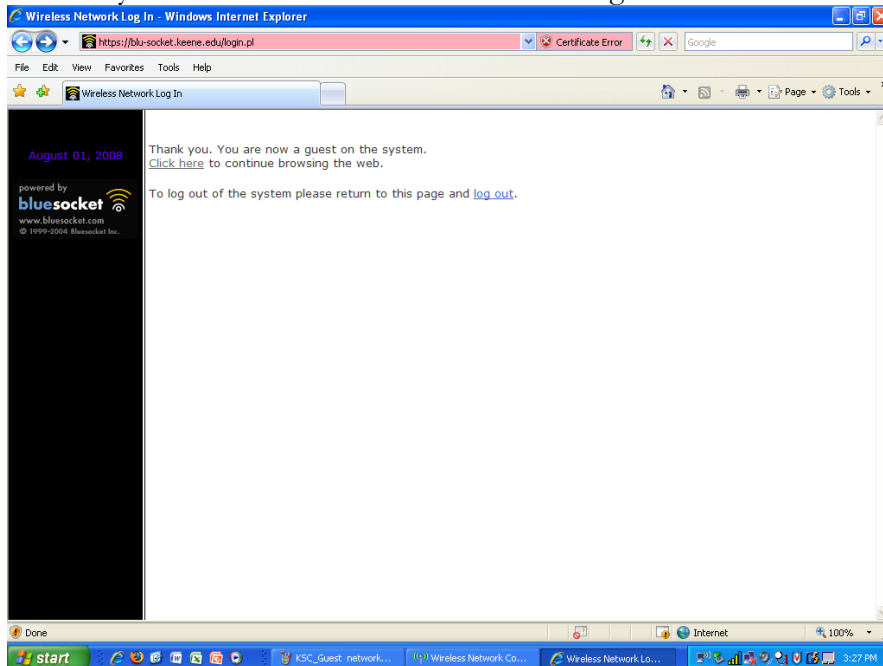


You will need to click on **“Continue to this website(not recommended)”**. Even though it does say it is not recommended, you should still connect as windows is indicating that it does not recognize Keene State College in its records of trusted certificate providers.

7. You will now be redirected to the KSC Guest Wireless Access site. In the upper left side of the screen you will see a place for Guests to enter their email addresses.



Enter in your email address and click on the “Log In” link.



You will see a confirmation screen and will then be redirected to the external website.

You're done! When you are within range of the KSC_Guest Wireless Network, you should connect automatically. No more configuration is needed for this wireless access.

If you have any questions concerning this or any other technology issue, please contact the HelpDesk at 358-2532, email helpdesk@keene.edu or stop by our office on the 2nd floor of Elliot Hall.