

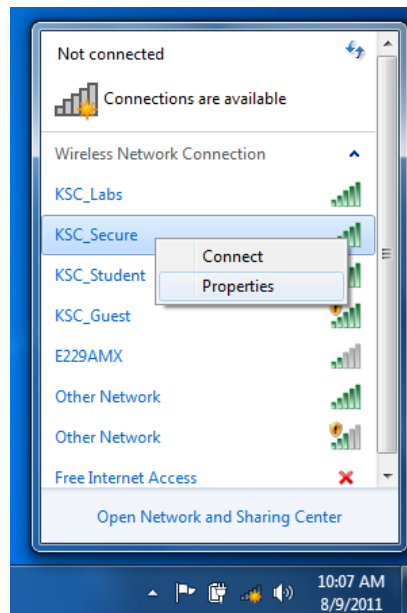
Connecting Windows 7 to KSC_Secure Wireless Network

Note: Before you begin you must be the administrator of the PC you are going to connect configure to connect to the **KSC_Secure** network. Also confirm that the date and time are correct on your PC.

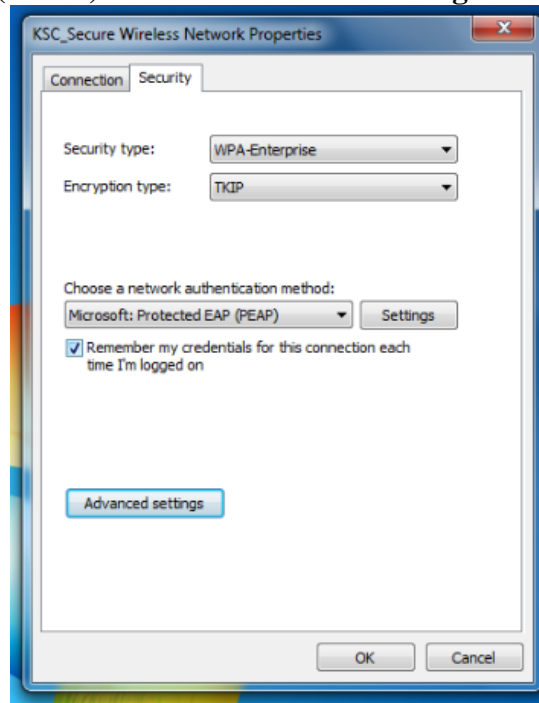
1. From your system tray left click on your wireless icon.



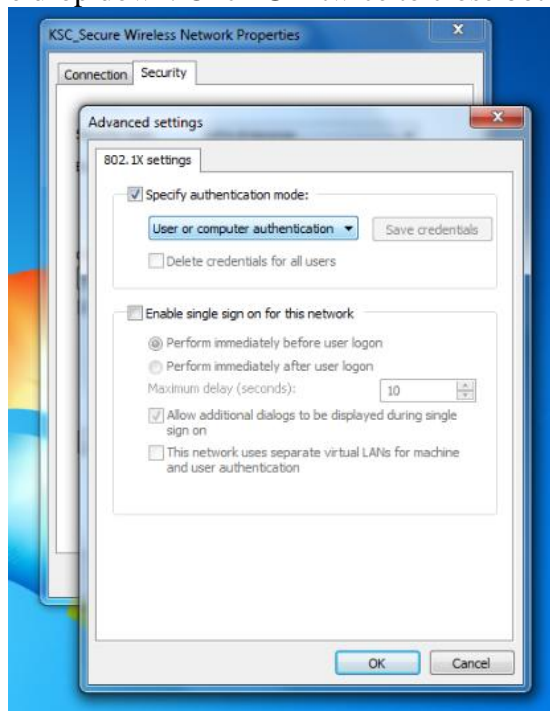
2. From the list of available wireless networks, right click **KSC_Secure** and click **Properties**.



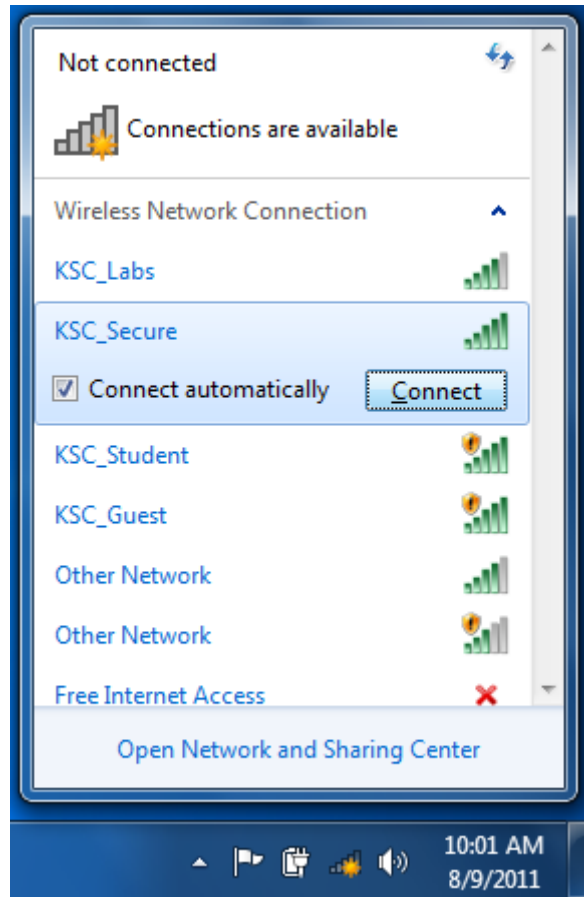
3. Now click on the security tab and under **Choose a network authentication method:** select **Protected EAP (PEAP)** and click **Advanced settings**.



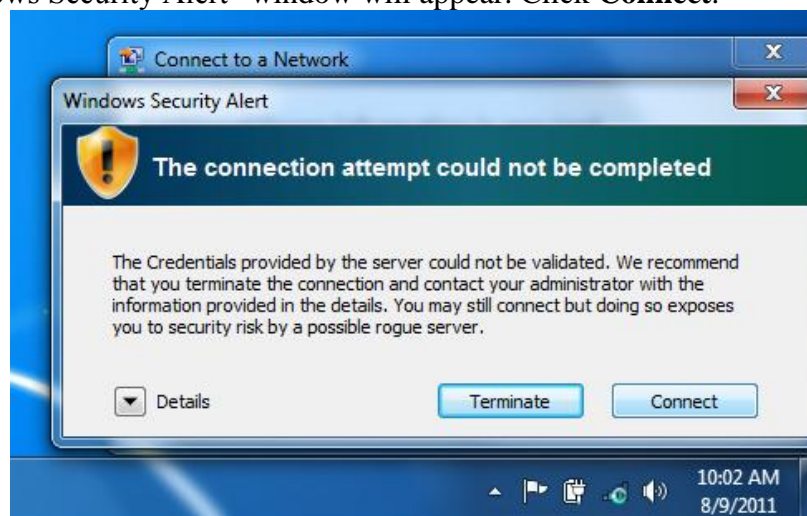
4. Check the box for **Specify Authentication Mode:** and select **User or Computer authentication** from the drop down. Click **OK** twice to close both open boxes.



5. From your system tray left click on your wireless icon, check the box **Connect Automatically** and choose **Connect**.



6. A "Windows Security Alert" window will appear. Click **Connect**.



7. If this machine is not a Keene State College owned laptop then you will be prompted to enter Network Credentials. For Faculty/Staff enter **Keene_State\yourNetID** and your NetID password. For Students enter **Student\yourNetID** and your NetID password.



Click **OK** and you will connect

You are all done! Now when you are in range of the KSC_Secure network you will automatically connect. No more configurations are needed.

If you have any questions concerning this or any other technology issue, please contact the HelpDesk at 358-2532, email helpdesk@keene.edu or stop by our office on the 2nd floor of Elliot Hall.