
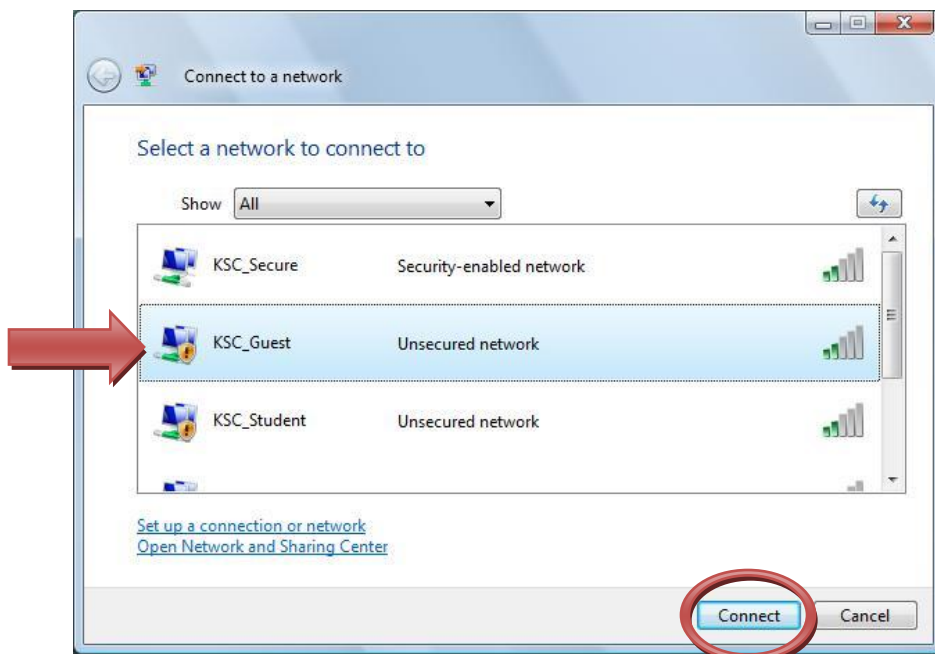


Connecting Windows Vista to the KSC_Guest Wireless Network

1. Go to the menu bar and click on the Windows Vista Start Button . Click on **“Connect to”**.

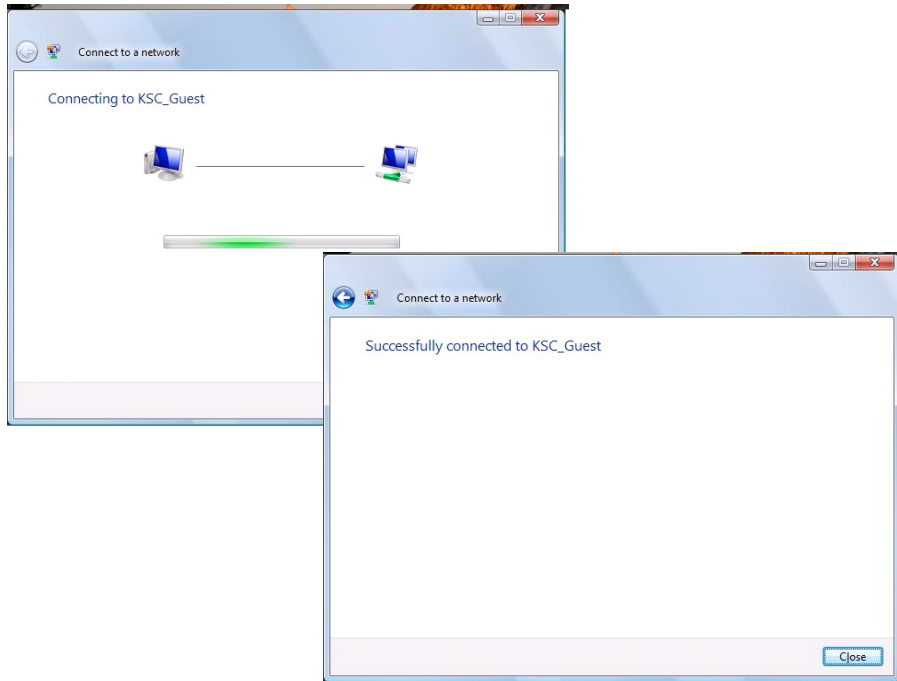


2. This will open up the **Connect to a network** window and display all available broadcast networks in range of your wireless network card.

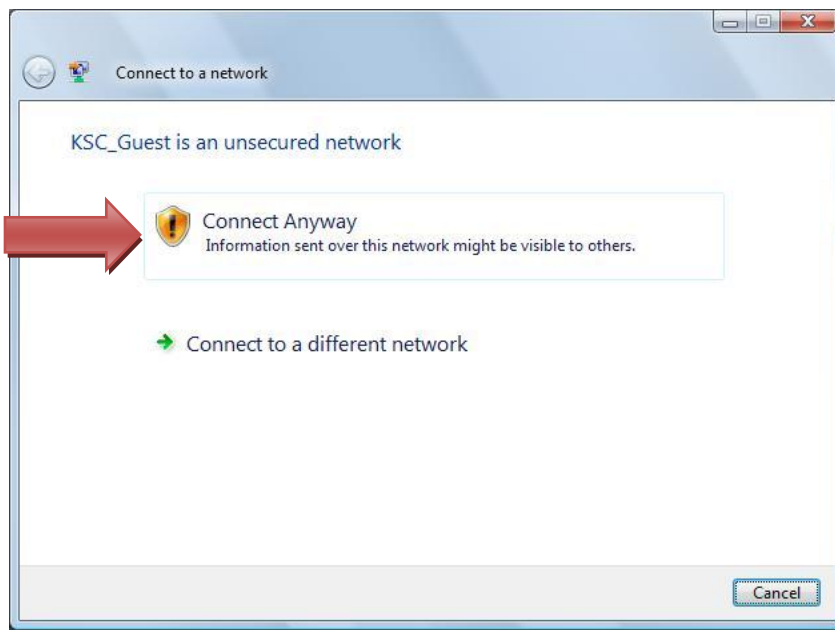


3. Select the **KSC_Guest** network and then click on **Connect**.

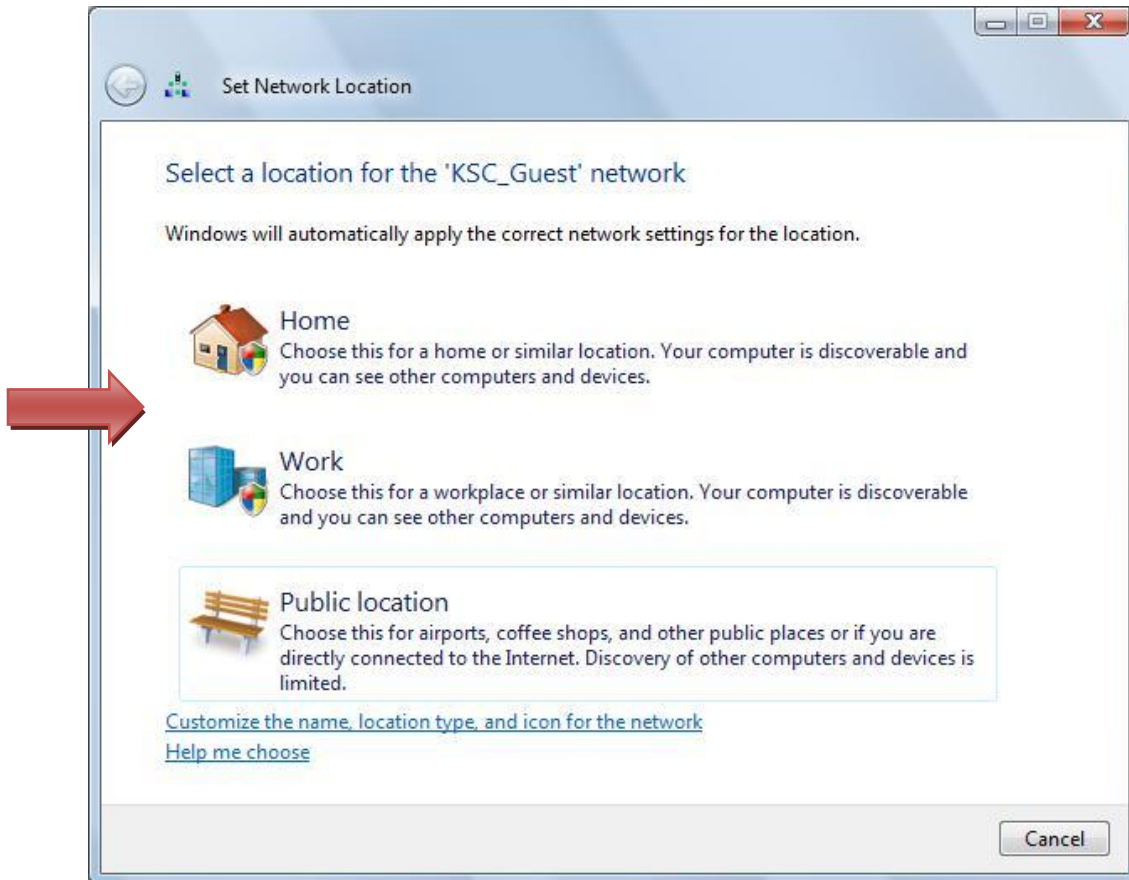
4. Windows Vista will indicate it is connecting to KSC_Guest and if the connection was successful.



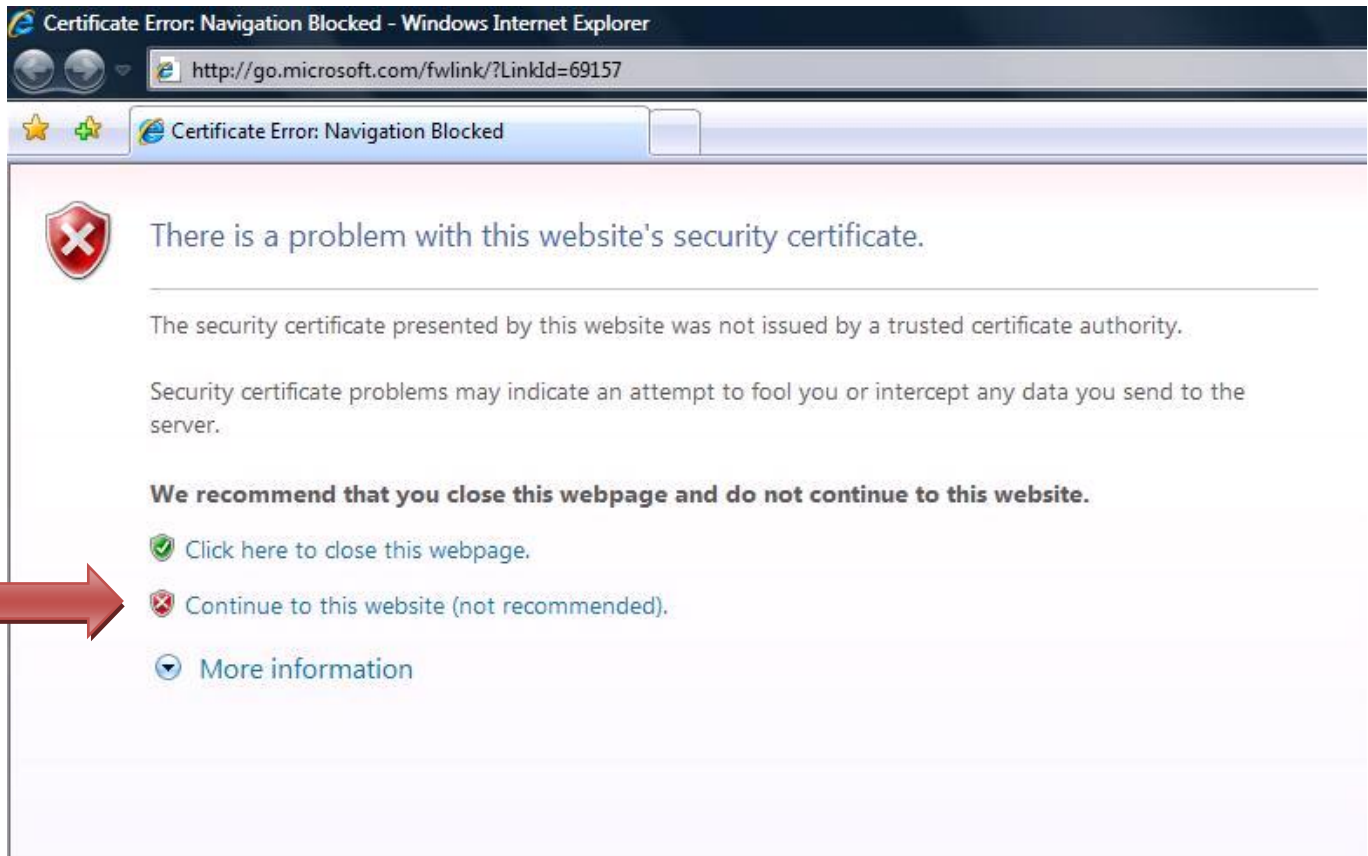
5. Depending on how you have configured Windows Vista, you may need to confirm you would like to connect to an unsecured network. The KSC_Guest network is not encrypted.



6. You may also be prompted to select the location of the KSC_Guest Network. KSC_Guest is a public location.

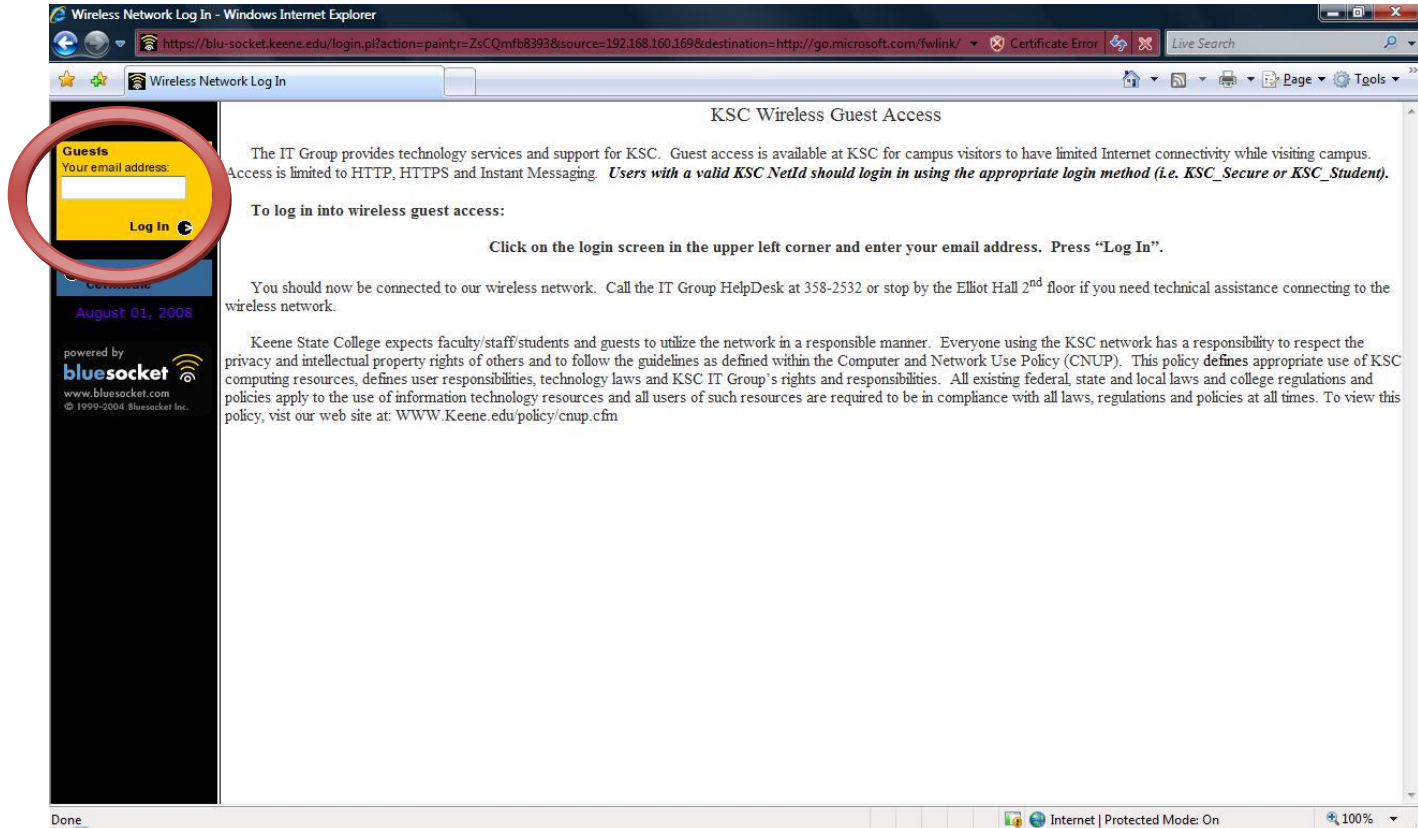


7. Once your wireless card connects to KSC_Guest, you need to open an Internet browser like Internet Explorer or Firefox. Once you try to connect to any non-keene.edu address you will see this screen.

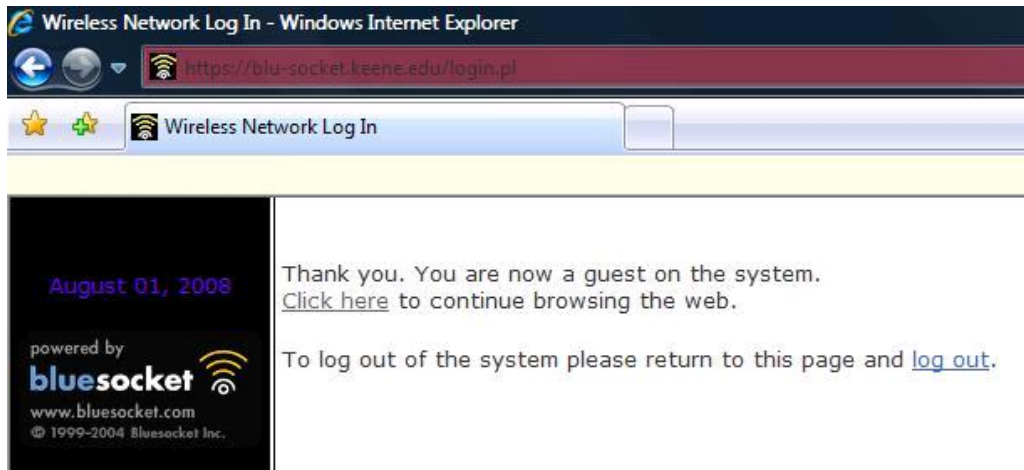


You will need to click on **“Continue to this website(not recommended)”**. Even though it does say it is not recommended, you should still connect as windows is indicating that it does not recognize Keene State College in its records of trusted certificate providers.

8. You will now be redirected to the **KSC Wireless Guest Access** site. In the upper left side of the screen, you will see a place for Guests to enter their email addresses.



Enter your email address and click on the “Log In” link. You will see a confirmation screen and will be redirected to your original external website.



You're done! When you are within range of the KSC_Guest Wireless Network, you should connect automatically. No more configuration is needed for this wireless access.

If you have any questions concerning this or any other technology issue, please contact the HelpDesk at 358-2532, email helpdesk@keene.edu or stop by our office on the 2nd floor of Elliot Hall.