

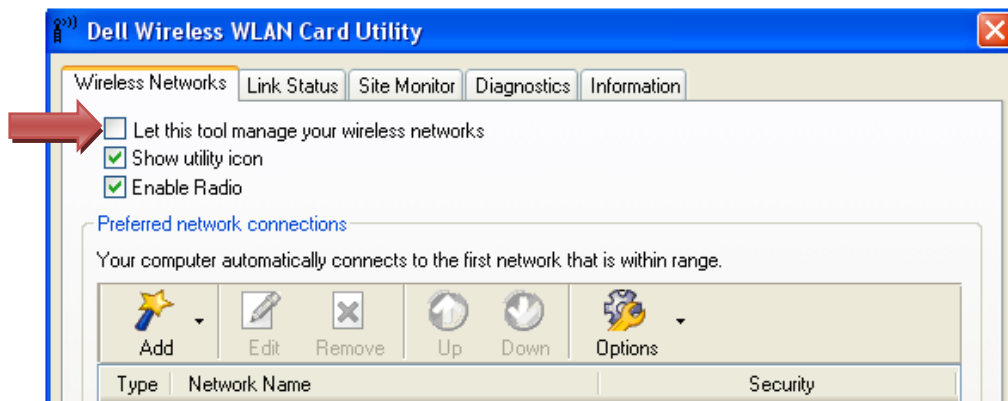


For Faculty, Staff and Students of Keene State College

Connecting Windows XP to KSC_Secure Wireless Network

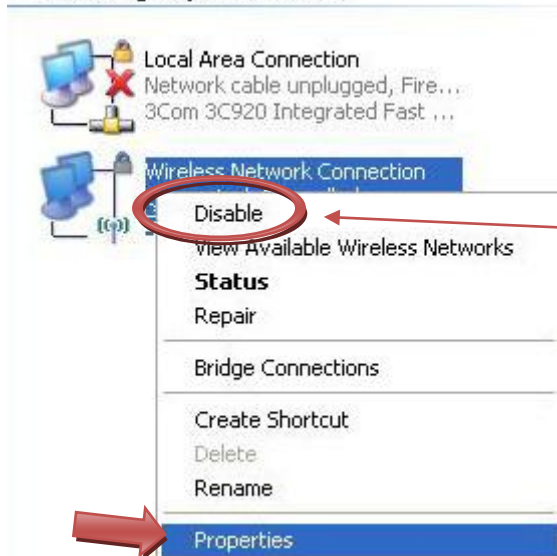
NOTE: Before you begin: you must have administrator privileges on your PC. These instructions are written for the **windows wireless network connection utility** . If you are using another utility, the location of the settings may be different.

For example, if you are using the **Dell Wireless WLAN Card Utility**  Right mouse click on the icon and select **open utility**. Uncheck the box “**Let this tool manage your wireless networks**” and follow the instructions below. These icons can be found in the lower right hand corner of the system tray. Also make sure the date and time on your laptop is correct!



1. Go to your **Control Panel** and find and double-click on **Network Connections**. You may need to double-click on Network and internet connections then Network connections depending on your preferred view.

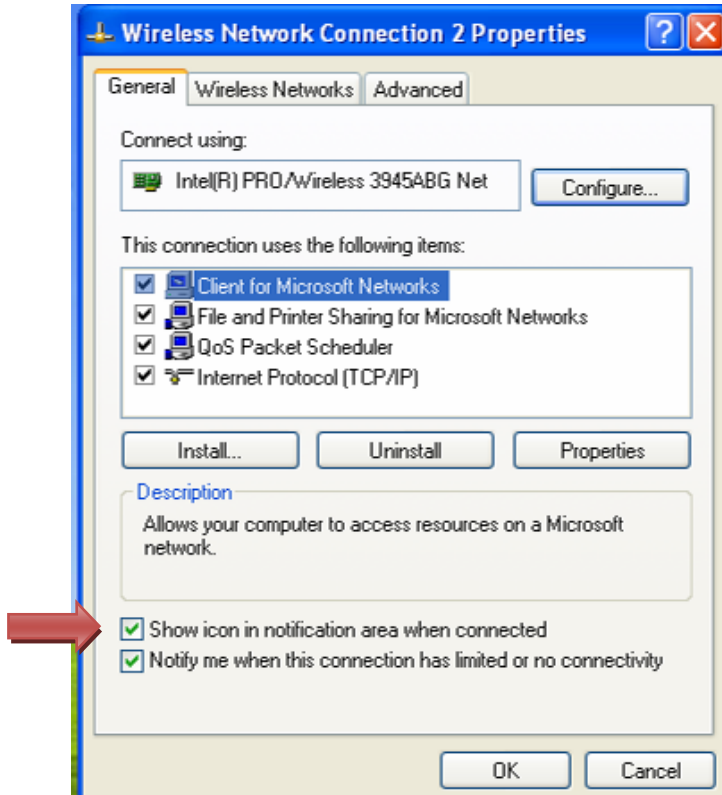
LAN or High-Speed Internet



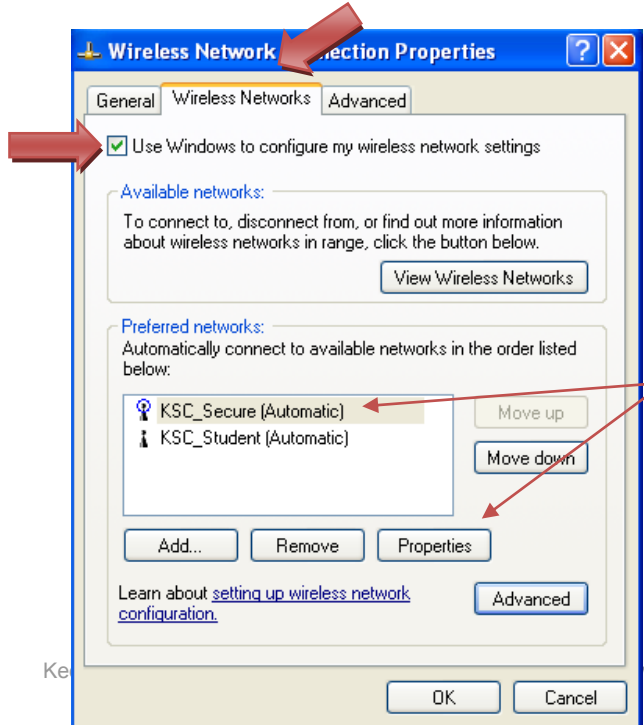
2. Right-click on **Wireless Network Connection** and confirm the wireless connection is enabled. You will know your connection is enabled if the only selection is “Disable” as shown here. If it is not enabled and select enable.

3. Right-click on **Wireless Network Connection** and select **Properties**.

4. Make sure the **“Show icon notification”** box at the bottom of the screen is checked.



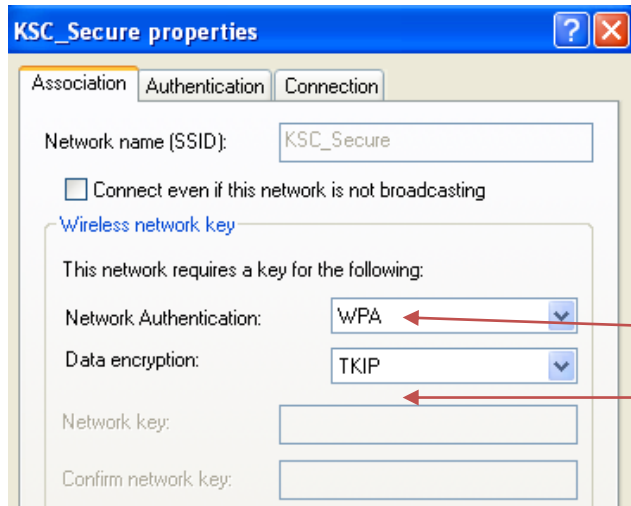
5. Now select the **Wireless Networks Tab**. Check the box labeled **Use Windows to configure my wireless network settings**.



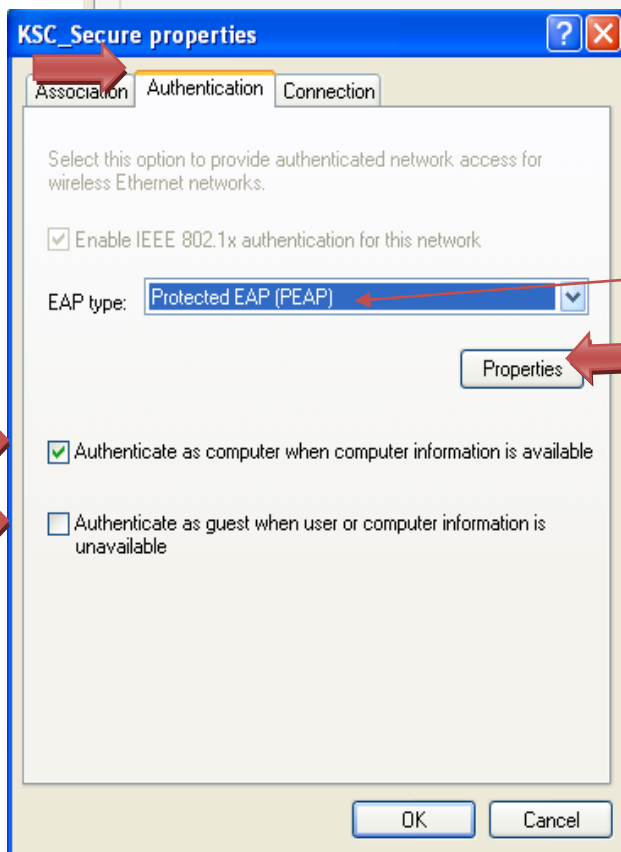
In the **Preferred Networks** window, Select **KSC_Secure**, and then click on **Properties**

(If the **KSC_Secure** network is **not** in the list you can add it manually by clicking the **ADD** button and entering **KSC_Secure**.)

- In the **KSC_Secure properties** window, confirm the following settings in the **Wireless Network Key** box.



- **WPA** for Network Authentication.
- **TKIP** for Data encryption.

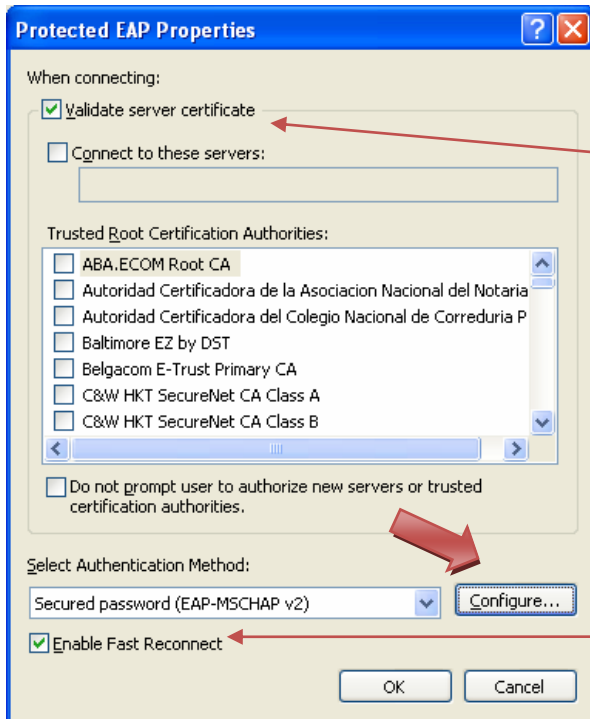


- Then click on the **Authentication Tab**.

- For EAP type, use the down arrow to choose **Protected EAP (PEAP)**.

- Make sure “**Authenticate as computer when computer information is available**” is **checked**.
- Make sure “**Authenticate as guest when user or computer information is unavailable**” is **unchecked**.

Now click on **Properties**.



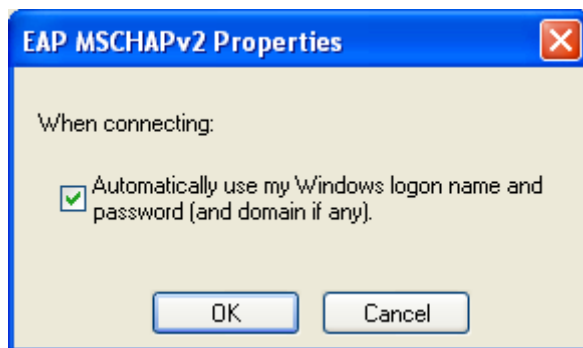
8. The **Protected EAP Properties** window should look like the one shown here.

• Make sure “**Validate server certificate**” is checked.

• Make sure “**Enable Fast Reconnect**” is checked.

9. Now Click **Configure** in the **Protected EAP Properties** window.

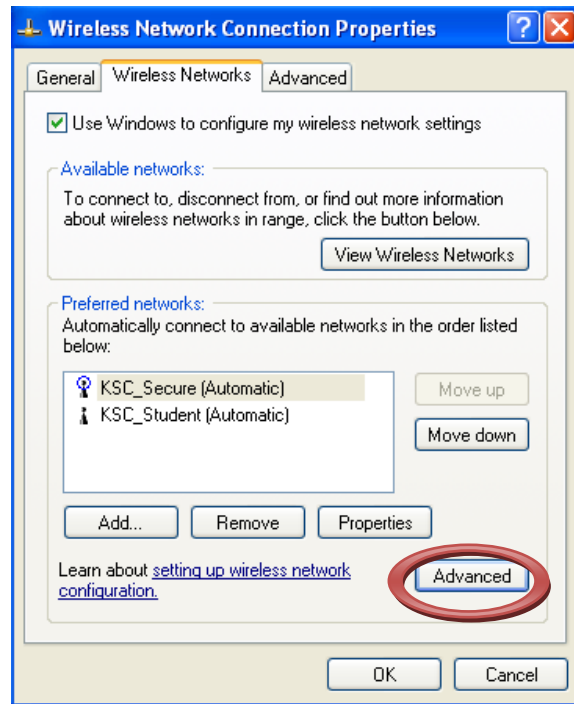
FACULTY and STAFF!!!! If you have logged in with your NetID and password to the laptop, make sure the box “**Automatically use my Windows logon name and password**” **IS** checked then click **OK**.



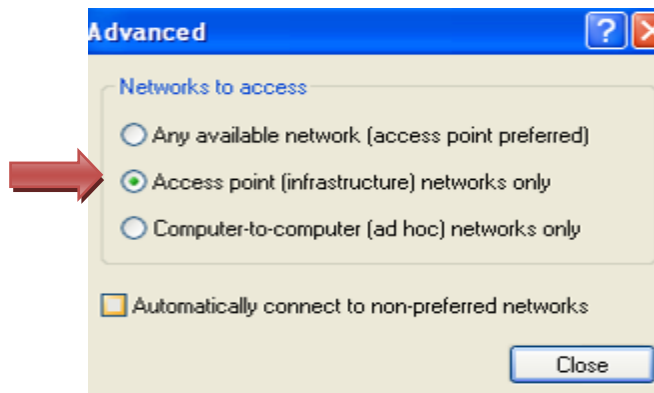
If you are logged in as another user or with a generic auto login, please make sure the box “**Automatically use my Windows logon name and password**” is **NOT** checked, then click **OK**.

STUDENTS!!!! Make sure the box “**Automatically use my Windows logon name and password**” is **NOT** checked, and then click **OK**.

10. Click **OK** two more times to close both the **Protected EAP Properties** window and the **KSC_Secure Properties** windows.
11. In the **Wireless Network Connections Properties** window, click **Advanced**.




Make sure “**Access point (infrastructure) networks only**” is selected and that you **DO NOT** have “**Automatically connect to non-preferred networks**” checked.



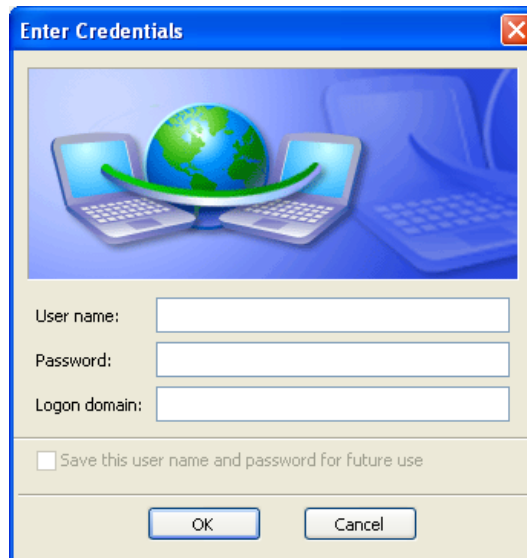
12. Click “**Close**” Then Click **OK** and close the network connections window.

13. A popup window will now appear in the lower right task bar.
- If you are connecting as a **Student** it will say “Click here to select a certificate or other credentials for Connection to the network KSC_Secure

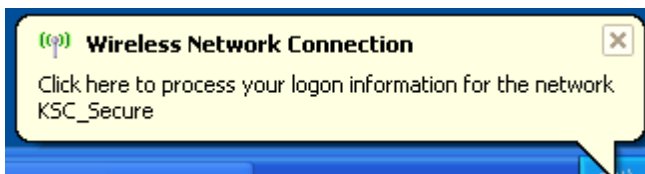



Click on the popup to see the **Enter Credentials** window shown here. If you do not see the popup single click on the  icon to see the message.

You must enter your **NetID**, **Password**, and in “**Logon domain**”. Type the word **STUDENT**. Then **click OK**.



- Students will now see a popup that will say “Click here to process your logon information for the network KSC_Secure”.
- If you are connecting as **Faculty or Staff** and have checked the “Automatically use my Windows logon name and password” in section 7, you will see a popup that will say “Click here to process your logon information for the network KSC_Secure”.



Click on the popup to see the **Validate Server Certificate** window shown here. If you do not see the popup, single click on the  icon to see the message.



Then **click OK**.

You're done! When you are within range of the KSC_Secure wireless network, you should connect automatically. No more configuration is needed for secure wireless access.

If you have any questions concerning this or any other technology issue, please contact the HelpDesk at 358-2532, email helpdesk@keene.edu or stop by our office on the 2nd floor of Elliot Hall.