


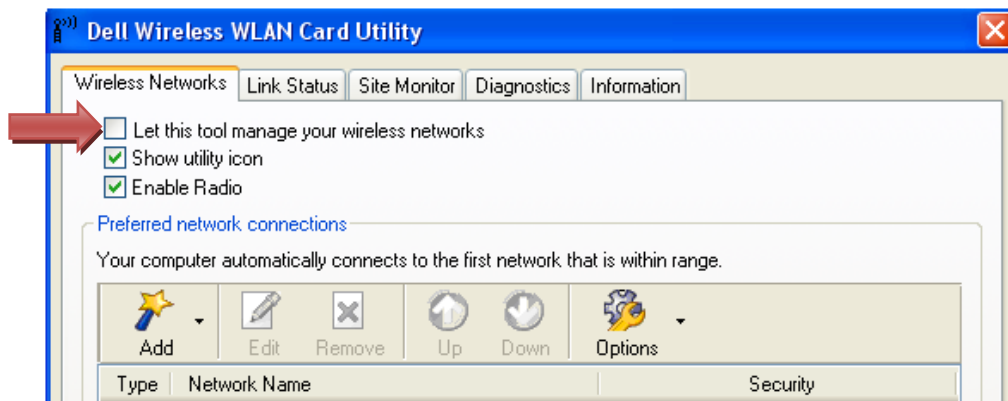
For Faculty and Staff of Keene State College

Quick Start

Configuring Windows XP to KSC_Secure Wireless Network

NOTE: Before you begin you must be logged into your laptop to the Keene_State domain with your NetID and Password.

In the **Dell Wireless WLAN Card Utility**  Right mouse click on the icon and select **open utility**. Uncheck the box “**Let this tool manage your wireless networks**“and follow the instructions below. These icons can be found in the lower right hand corner of the start bar. Also make sure the date and time on your laptop is correct!



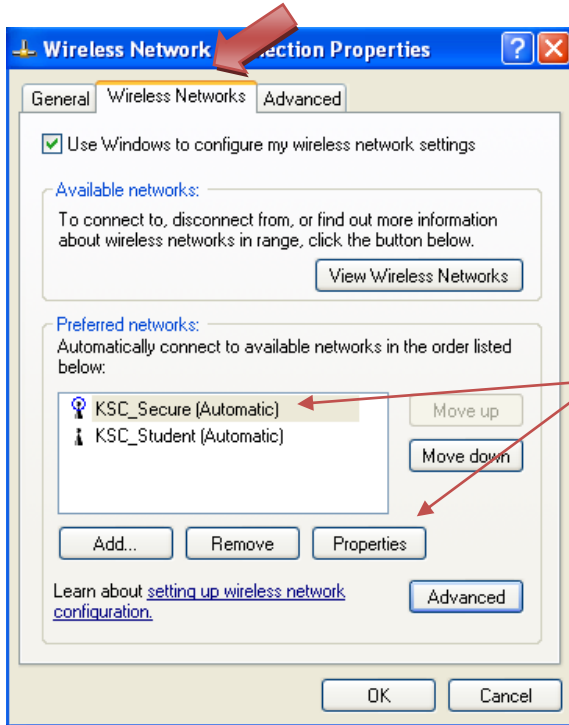
1. Go to **Control Panel** and double-click on **Network Connections**. You may need to double-click on Network and Internet Connections, then Network Connections depending on your preferred view.



2. Right-click on **Wireless Network Connection** and confirm the wireless connection is enabled. You will know your connection is enabled if the only selection is “Disable as shown here. If it is not enabled, then select enable.

3. Right-click on **Wireless Network Connection** and select **Properties**.

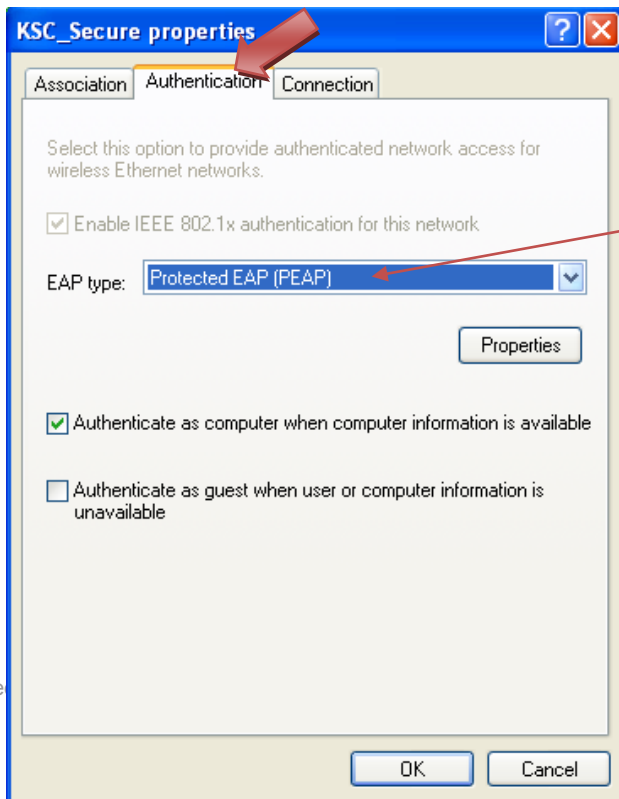
4. Select the **Wireless Networks Tab**.



In the **Preferred Networks** window, Select **KSC_Secure**, and then click on **Properties**


(If the **KSC_Secure** network is **not** in the list you can add it manually by clicking the **ADD** button and entering **KSC_Secure** and click **OK**.)

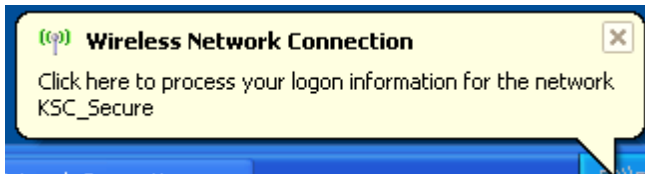
5. Then click on the **Authentication Tab**.




• For EAP type, use the down arrow to choose **Protected EAP (PEAP)**.

Click **OK** twice and then close the Network Connections window.

6. Single click on the  **windows wireless network connection utility** icon. This will list the available wireless connections. Select **KSC_Secure** and connect.
7. You will see a popup that will say “**Click here to process your logon information for the network KSC_Secure**”.



Click on the popup to see the **Validate Server Certificate** window shown here. If you do not see the popup, single click on the  icon to see the message.



Then **click OK**.

You're done! When you are within range of the KSC_Secure wireless network, you should connect automatically. No more configuration is needed for secure wireless access.

If you have any questions concerning this or any other technology issue, please contact the HelpDesk at 358-2532, email helpdesk@keene.edu or stop by our office on the 2nd floor of Elliot Hall.